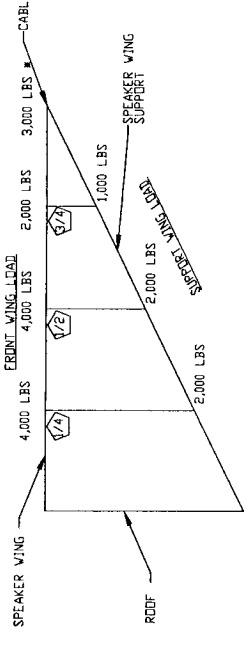


BEAM LOAD CHART

TRUSS	UNIFORM LOAD (LBS)	1/2 POINT (LBS)	1/3 POINT (LBS)	1/4 POINT (LBS)
BEAM 01	-	6667	1600	1200
BEAM 02	-	2500	950	650
BEAM 03	-	7000	2700	1800
FLOOR	150 LB'S/SQFT	-	-	-

NOTE: ONLY ONE LOADING CONDITION PER BEAM MAY BE USED AT ONE TIME.

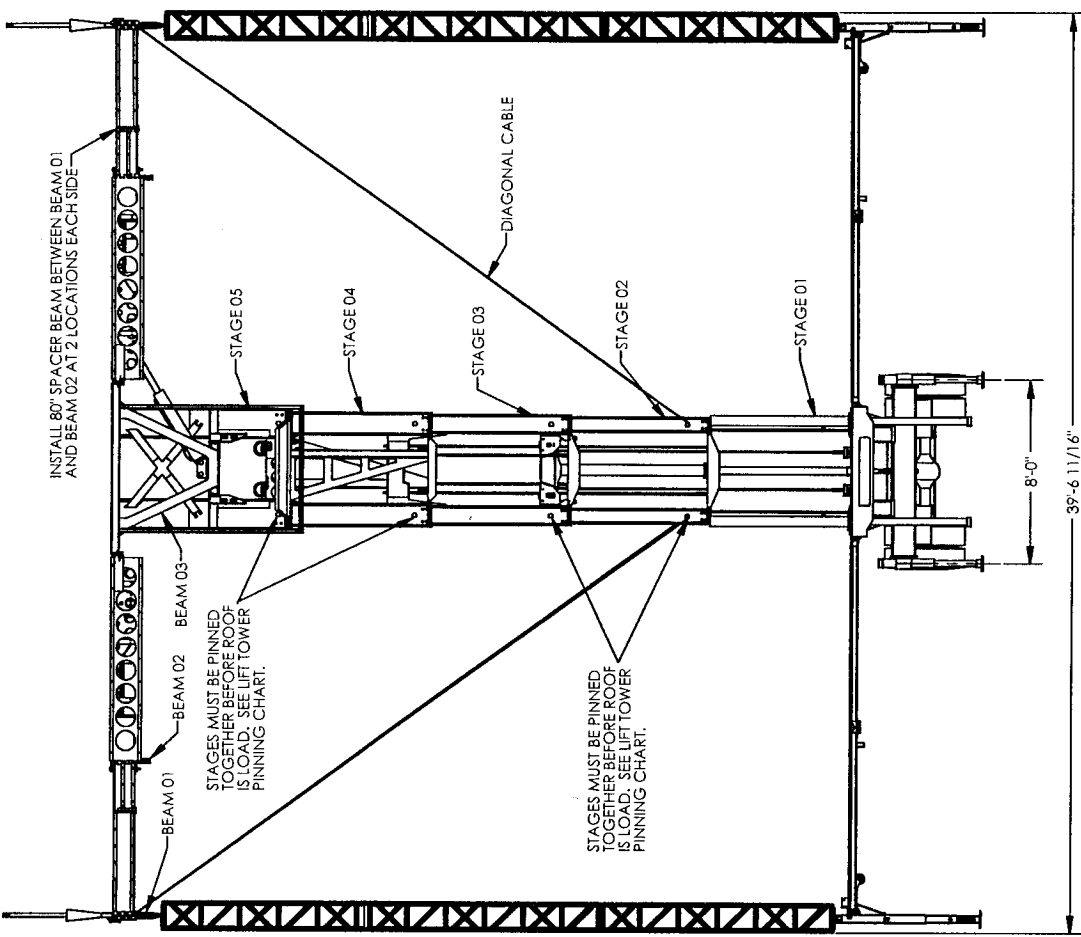
SPEAKER WING LOAD CHART



LIFT TOWER PINNING CHART

STAGE NUMBER	CEILING LOAD
1	32,334 LBS
2	22,334 LBS
3	12,334 LBS
4	N/A
5	N/A

NOTE: THIS CHART APPLIES TO ALL SET UP HEIGHTS.



1. FLOOR HEIGHT IS ADJUSTABLE FROM APPROXIMATELY 48 INCHES HIGH TO APPROXIMATELY 72 INCHES HIGH.
2. OUTRIGGER LEGS HAVE 27 INCHES OF TRAVEL AND CAN BE LEVELED INDIVIDUALLY.
3. SPEAKER WINGS CAN BE POSITIONED ON EITHER SIDE OF THE STAGE.
4. ACCESS STAIRS AND HANDRAILS ARE PROVIDED FOR THE SIDES AND REAR OF THE STAGE.
5. A SELF-CONTAINED HYDRAULIC SYSTEM IS POSITIONED HYDRAULICALLY WITH THE STAGE FOR LIFTING AND LOWERING THE STAGE.
6. THE STAGE IS SUPPORTED BY 25,000 LBS LEGS AS TRAILERS FROM THE STAGE TRAILER.
7. THE STAGE TRAILER HAS THE SAME WEIGHT AS THE TRAILER FROM WHICH IT IS BEING LIFTED.
8. APPROXIMATELY 25,000 LBS LEGS ARE PLACED OVER 24 INCH SQUARE OUTRIGGER PADS.
9. APPROXIMATELY 25,000 LBS LEGS ARE PLACED OVER 24 INCH SQUARE OUTRIGGER PADS.
10. APPROXIMATELY 25,000 LBS LEGS ARE PLACED OVER 24 INCH SQUARE OUTRIGGER PADS.
11. ALL EQUIPMENT IN CEILING MUST BE SECURED FROM EXCESSIVE MOVEMENT DUE TO WIND.



FOR NUMBER	STANDARD	DATE	BY	CHKD	APP'D	SCALE	PROJECT	SHEET
11/02/07	11/02/07					1:48	SP 002-000	1 OF 1
DESCRIPTION	FINAL ASSEMBLY 50 X 40 STAGE	ASSEMBLY NUMBER	SP 002-000	DATE	11/02/07	SCALE	1:48	SHEET
DESCRIPTION	FINAL ASSEMBLY 50 X 40 STAGE	ASSEMBLY NUMBER	SP 002-000	DATE	11/02/07	SCALE	1:48	SHEET

THIS MATERIAL IS THE PROPERTY OF STAGERS INC. AND SHOULD NOT BE REPRODUCED, PHOTOCOPIED, OR TRANSMITTED IN ANY FORM OR BY ANY MEANS, ELECTRONIC OR MECHANICAL, INCLUDING PHOTOCOPYING, RECORDING, OR BY ANY INFORMATION STORAGE AND RETRIEVAL SYSTEM. THIS DOCUMENT IS NOT TO BE USED IN ANY WAY AGAINST STAGERS INC. STAGERS INC., LAWRENCE, KANSAS